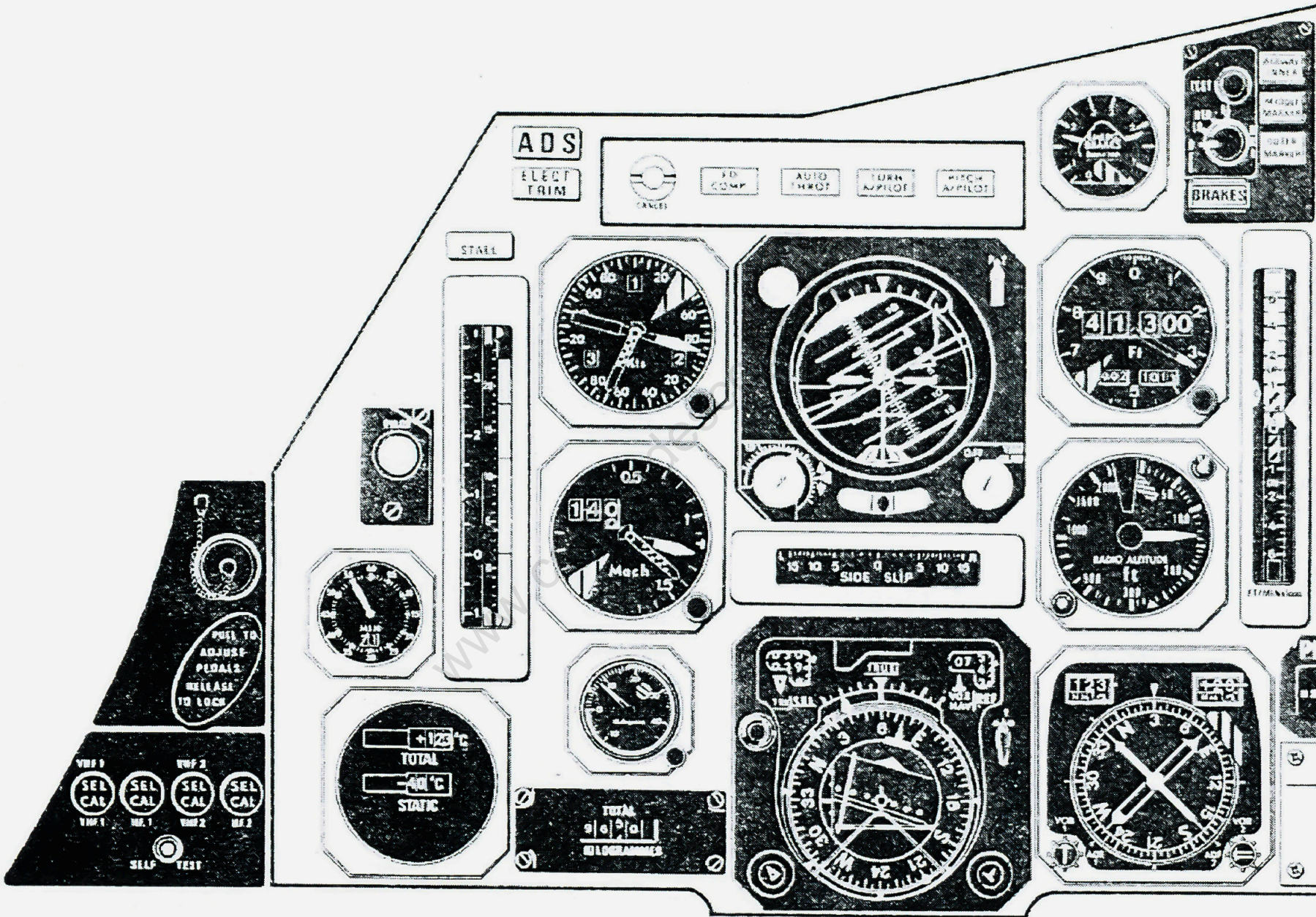


ENGINEER OXYGEN	1	OXYGENE MECANICIEN
PILOT OXYGEN	2	OXYGENE PILOTE
ANGLE OF ATTACK AND ACCELERATION	3	ANGLE D'ATTAQUE ET ACCEL
STALL	4	DECROCHAGE
ICE	5	VOYANT D'ALARME GLACE
A/TRIM A/T1 A/T2 A.D.S A/P1 A/P2	6	A/TRIM A/T1 A/T2 A.D.S A/P1 A/P2
AUTO PILOT STATE	7	ETAT PILOTE AUTOMATIQUE
BRAKE PRESSURE	8	BAISSE PRESSION
EMERGENCY BRAKE BRAKE FAIL	9	FREIN SECOURS PANNE FREINS
MARKER SWITCH	10	COMMANDE MARKER
MARKER	11	MARKER
S/B HORIZON	12	HORIZON DE SECOURS
H.P.C R.P.M	13	COMPTE - TOURS COMPRESSEUR
T4	14	T4
TRANSIT REVERSE	15	INVERSEURS
REHEAT	16	RECHAUFFE
ENGINE POWER	17	PUISSANCE REACTEURS
FLASHER	18	CLIGNOTANT
CONTROL SURFACES INDICATOR	19	INDICATEUR POSITION GOUVERNES
CENTRE OF GRAVITY	20	CENTRE DE GRAVITE
DIGITAL CLOCK	21	MONTRE NUMERIQUE
CABIN ALTITUDE	22	ALTITUDE CABINE
V.S.I	23	INDICATEUR DE VITESSE ASCENTIONNELLE
CLOCK	24	MONTRE
TOTAL AND STATIC TEMPERATURE	25	TEMPERATURE STATIQUE ET TOTALE
BACK BEAM SWITCH	26	COMMANDE FAISCEAN MARKER
V.O.R CHANGE OVER	27	COMMUTATION V.O.R
HORN	28	CLAKSON
V.O.R D.M.E A.D.F	29	V.O.R D.M.E A.D.F
RADIO ALTIMETER	30	ALTIMETRE RADIO
ALTIMETER	31	ALTIMETRE
HORIZON	32	HORIZON
COURSE	33	CAP
YAW	34	LACET
THREE AXIS TRIM	35	TRIM TROIS AXES
LANDING GEAR INDICATOR	36	INDICATEUR TRAIN
MACH	37	MACH
A.S.I	38	ANEMOMETRE
MOVING MAP	39	ROUTIER
RADAR	40	RADAR
RADAR CONTROL	41	COMMANDE RADAR
TEST UNIT BRAKES	42	ESSAI FREINS
S/B ALTIMETER	43	ALTIMETRE DE SECOURS
S/B A.S.I S/B MACH	44	ANEMOMETRE DE SECOURS MACH DE SECOURS

**FIG.7.3 DASH PANELS  
PLANCHES DE BORD**



NORM. CABIN  ENGINE 1 TEST  ENGINE 2 TEST  MWG ALERT  ENGINE 3 TEST  ENGINE 4 TEST  END FLAP

AUDIO  **1**  **2**  **3**  **4**  AUDIO

CANCEL  CANCEL

RPM 0 20 40 60 80 100 120  
 RPM 0 20 40 60 80 100 120  
 RPM 0 20 40 60 80 100 120  
 RPM 0 20 40 60 80 100 120

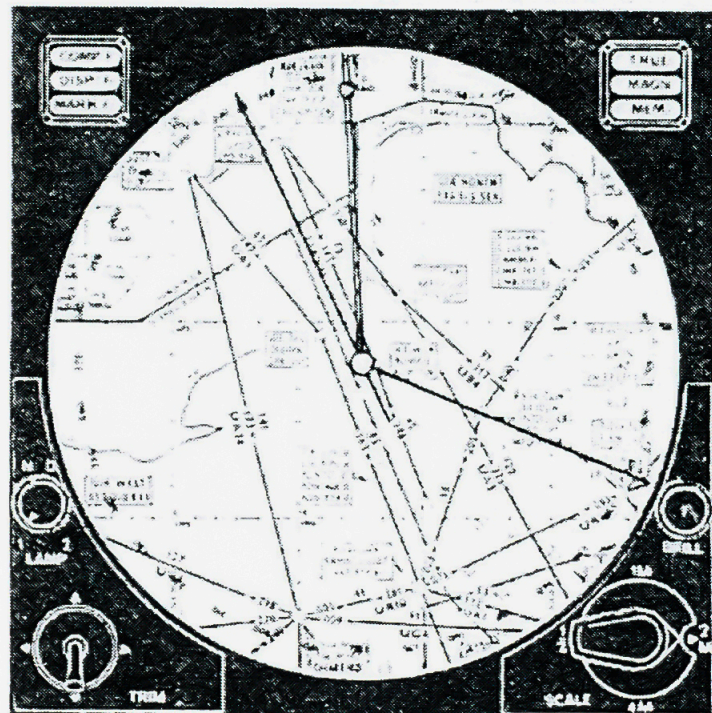
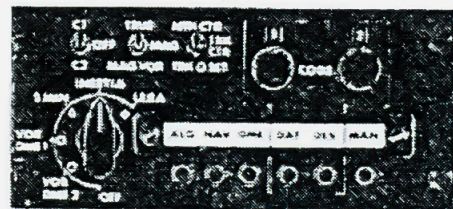
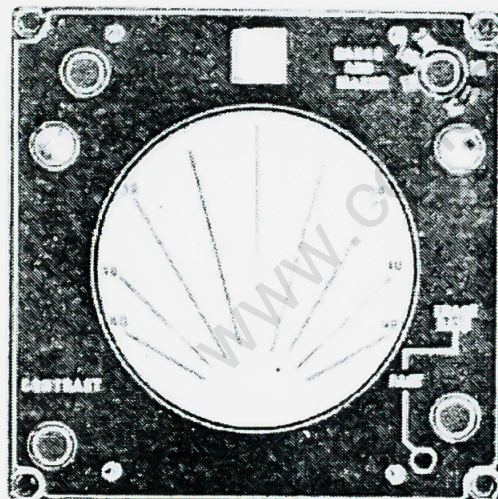
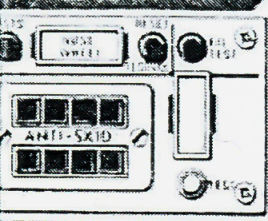
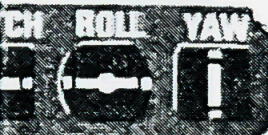
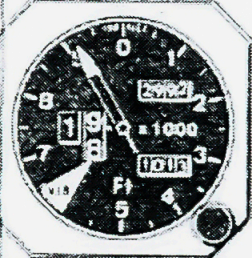
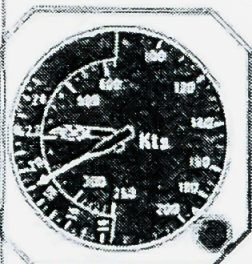
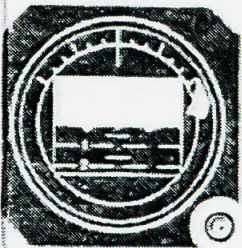
TEMP 0 100 200 300  
 TEMP 0 100 200 300  
 TEMP 0 100 200 300  
 TEMP 0 100 200 300

JET PIPE PSI 0 10 20 25 30

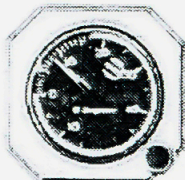
TRANSIT REVERSE  
 TRANSIT REVERSE  
 RE HEAT RE HEAT RE HEAT RE HEAT  
 TRANSIT REVERSE  
 TRANSIT REVERSE

M W S DOWN VISOR DOWN NOISE  
 3°

00205 052000  
 0 20 40 60 80 100 120  
 0 20 40 60 80 100 120  
 0 20 40 60 80 100 120  
 0 20 40 60 80 100 120



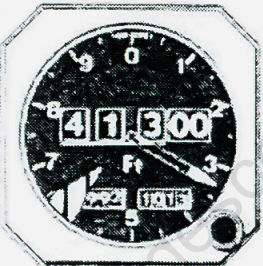
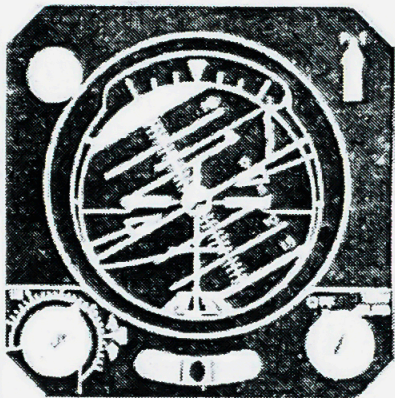
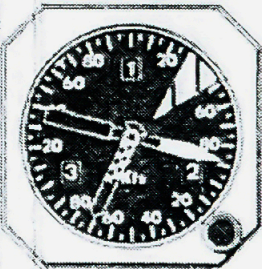
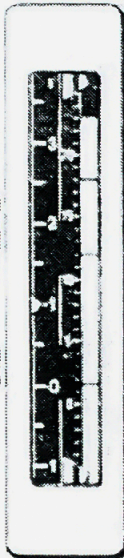
09:15:10  
HRS MIN SEC



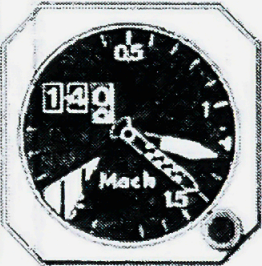
STALL

ADS  
ELECT TRIM

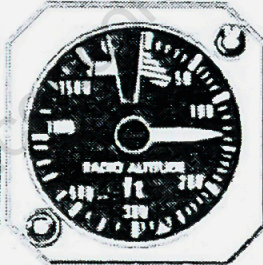
TO COMP AUTO THROTTLE TURN APPILOT PITCH APPILOT



1. FAST-VALE  
2. SLOW-VALE  
3. STOP-VALE  
4. HOLD-VALE



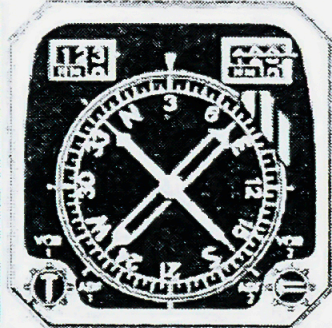
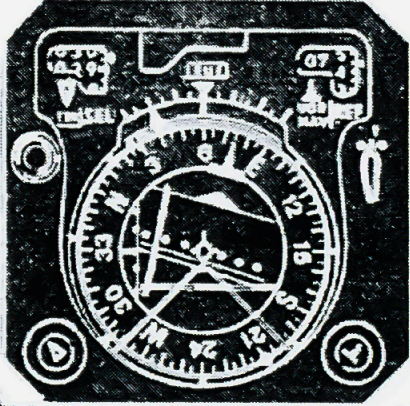
15 10 5 SIDE SLIP 5 10 15



LEFT UPPER RIGHT

AUTO RODDER

TEST



123 °C TOTAL  
-80 °C STATIC

WHEEL TO ADJUST PERBALS RELEASE TO LOCK

VW 1 VW 2  
SEL CAL SEL CAL  
W 1 W 2

COMM NAV TEST UP/L VOR DME DMR NAV 11805 10800

COMM NAV TEST UP/L VOR DME DMR NAV 11805 10800

FD1 TURN PITCH FD2 TURN PITCH

VERT SPEED MAN ALT HOLD AP1 IAS HOLD VMO TOD PITCH

TURN

AP2 TRK HDG NAV MAN VOR LOC GS MAN GS AUTO LAND

FLIGHT LEVEL 450 HOLD ACQUIRE FLIGHT LEVEL 1 2 AUTO THROTTLE MACH IAS IAS SELECT DATUM ADJUST KNOTS 230

FD1 FD2 NAV VOR

NORM STBY

LH RH HEADING

NORM OFF

FD1 FD2

NAV VOR

TEST

MANUAL AUTO TEST

GREEN NORMAL BLUE

BLUE JAM GREEN JAM

SERVO CONTROLS

BLUE FAIL BLUE L.PRESS

GREEN FAIL GREEN L.PRESS

UP DOWN

THROTTLE THROTTLE THROTTLE THROTTLE

NORM BRAKE SELECTOR

STANDBY

AIR BRAKE FAIL EMERG IN

IN OUT

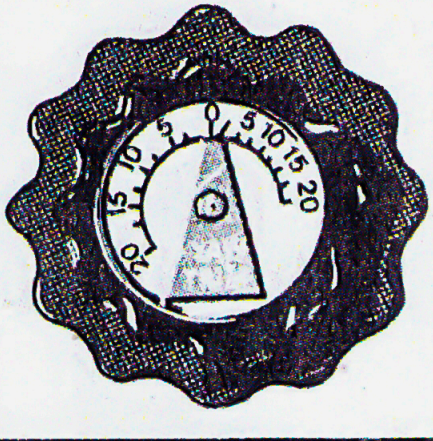
PARK

NORM NOSE HYD ARM

VISOR LOWER GREEN OFF YELLOW

ST.BY HYD

50 LOCK 50 LOCK



MASTER THROTTLES

L1 L1 L1 L1

OFF OFF OFF OFF

L2 L2 L2 L2

REHEAT LIGHT TEST

ON ON ON ON

UP VISOR 50 DOWN

UP VISOR 50 DOWN

VISOR NOSE

BLEED SENSOR ERROR

AUTO MAN RAMP SELECT AUTO MAN

RAMP CONTROL

INC OFF DEC

AUTO DUMP SELECT AUTO

MAN MAN

INC OFF DEC

DUMP CONTROL

INC OFF DEC

INC OFF DEC

SINERWAVE

INC OFF DEC

AFT SPILL CONTROL

INC OFF DEC

RAMP BLEED PRESSURE RECOVERY

079 079 079 079

LOCAL MACH NUMBER

245 245 245 245

RAMP POSITION

053 053 053 053

AUX. DOOR POSITION

062 062 062 062

000 000 000 000

INTAKE 1 BLEED PRESS TRIM

LOW HIGH

LANE 2 GAIN

LOW HIGH

EMERGENCY UNDER CARRIAGE LOWERING

H.P. COCKS

ON ON ON ON

1 2 3 4

OFF OFF OFF OFF

COMM 118.05 NAV 108.00

NAV TEST UP/L VOR DME DNR

PWR VOL STBY DME OVRD VOL

OFF NAV OFF

COMM 118.05 NAV 108.00

NAV TEST UP/L VOR DME DNR

PWR VOL STBY DME OVRD VOL

OFF NAV OFF

FD 1 TURN PITCH FD 2

TURN PITCH

AP 1 AP 2

VERT SPEED MAN ALT HOLD IAS HOLD VMO TOD PITCH

TURN

TRK HDG MAN VOR LOC GS MAN GS AUTO LAND

FLIGHT LEVEL 450 HOLD

ACQUIRE FLIGHT LEVEL

1 2 AUTO THROTTLE

MACH IAS IAS SELECT

DATUM ADJUST

KNOTS 230

NORM STBY

FD 1 FD 2 NAV VOR

LH RMH HEADING

NORM SHAKER OFF

FD 1 FD 2

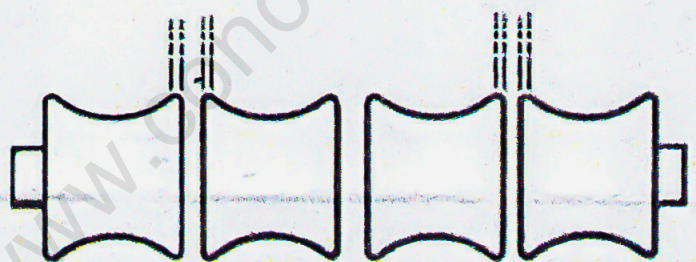
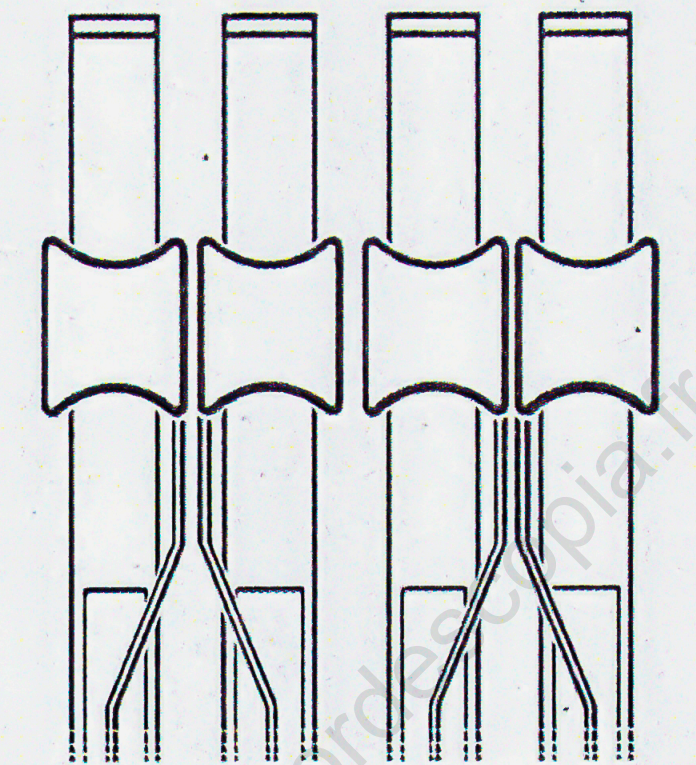
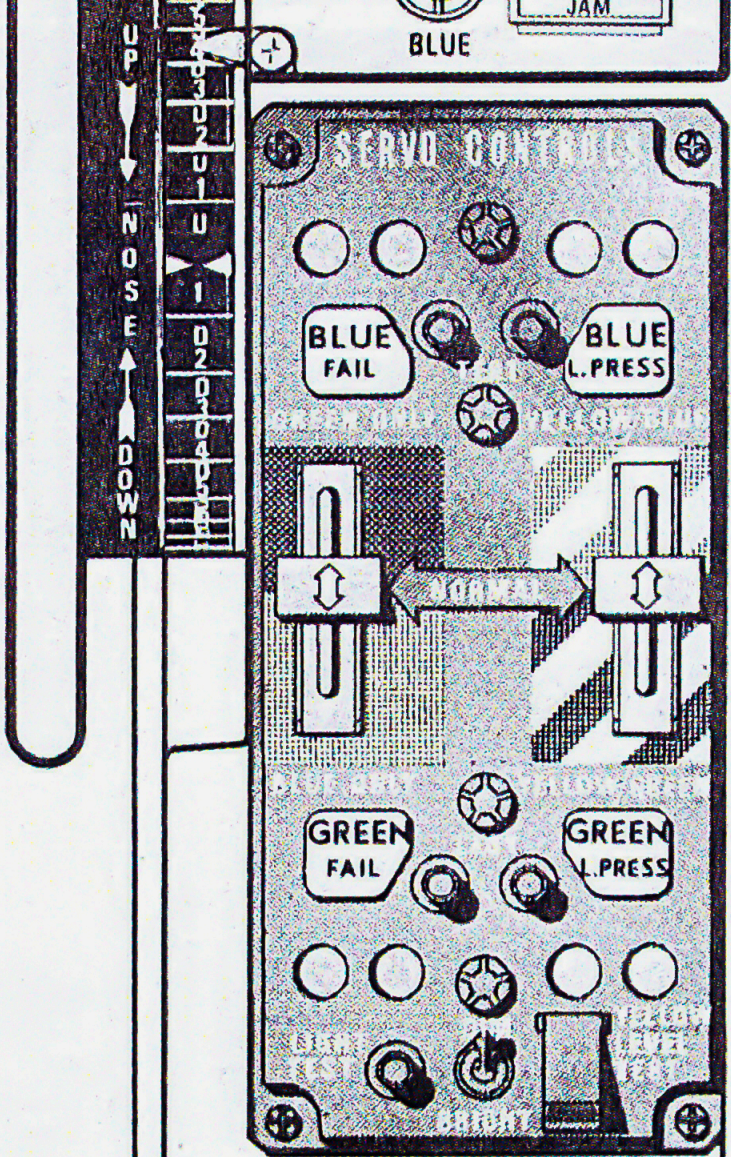
NAV VOR

HORN TEST

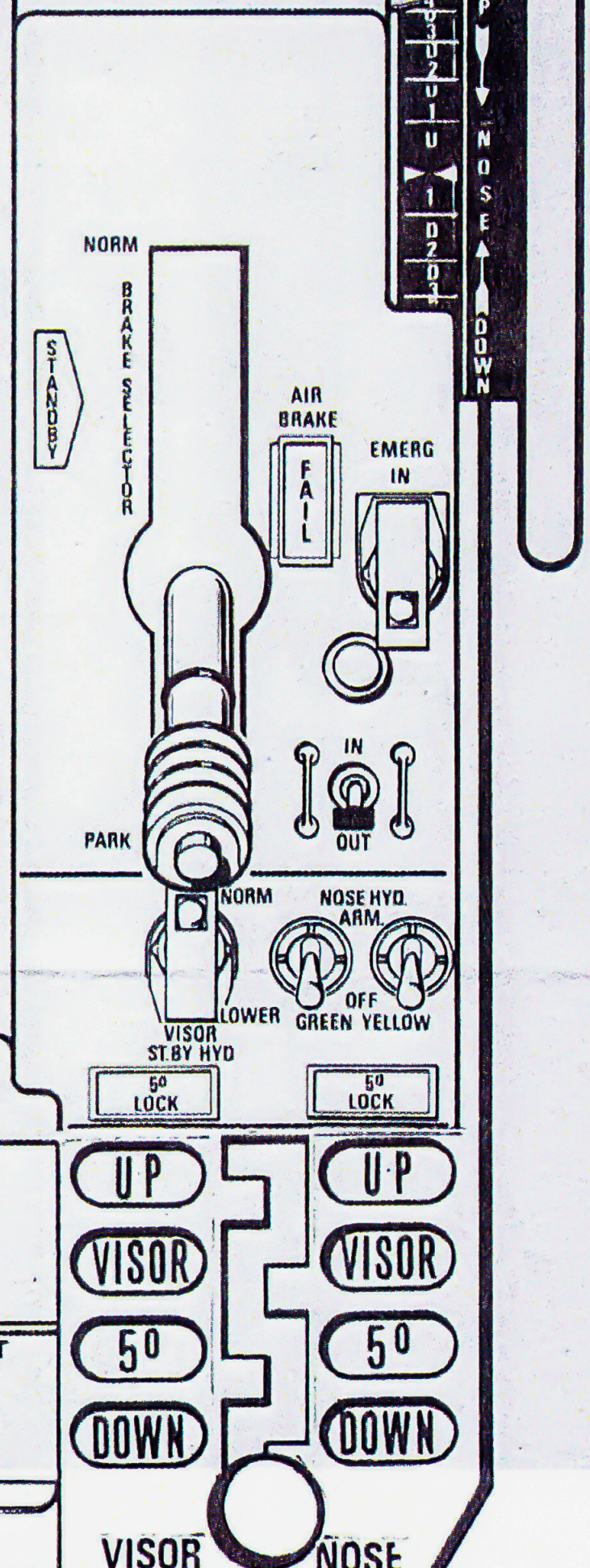
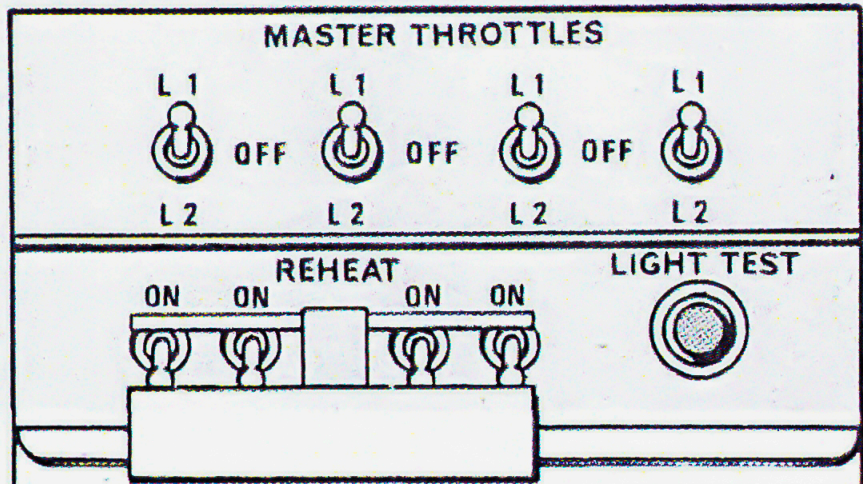
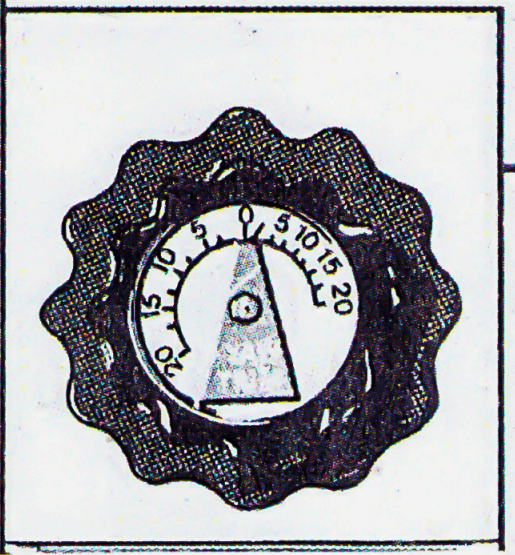
MANUAL AUTO

TEST GREEN

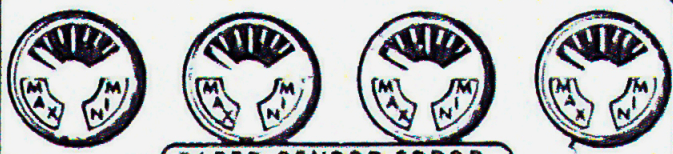
BLUE JAM NORMAL GREEN



THROTTLE    THROTTLE    THROTTLE    THROTTLE







BLEED SENSOR ERROR

AUTO MAN RAMP SELECT AUTO MAN

RAMP CONTROL

INC OFF DEC

AUTO DUMP AUTO

MAN MAN

INC OFF DEC OVERRIDE SINEWAVE

INC OFF DEC AFT SPILL CONTROL

INC OFF DEC

RAMP BLEED PRESSURE RECOVERY

079 079 079 079

LOCAL MACH NUMBER

245 245 245 245

RAMP POSITION

053 053 053 053

AUX. DOOR POSITION

062 062 062 062

000 000 000 000

LOW HIGH INTAKE 1 BLEED PRESS TRIM

LOW HIGH LANE 2 GAIN LOW

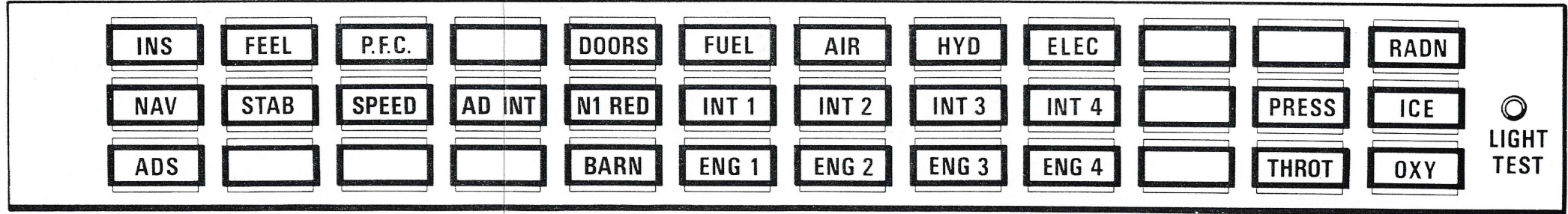
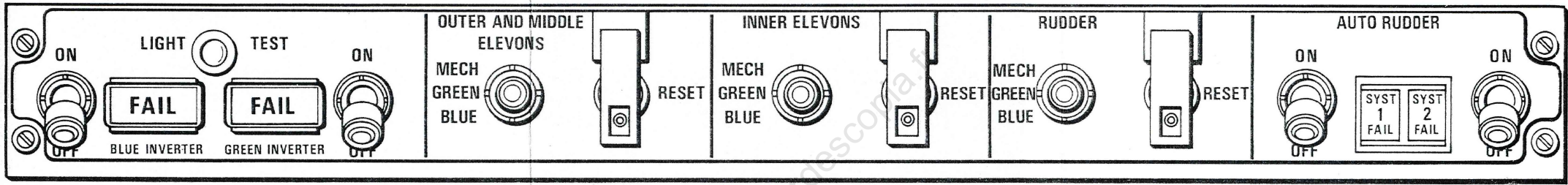
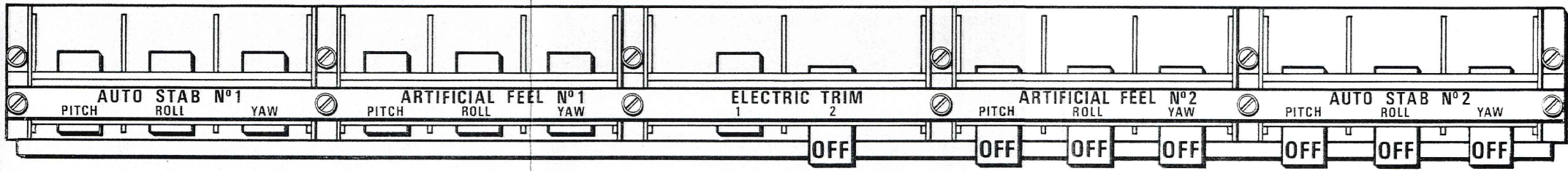
EMERGENCY UNDER CARRIAGE LOWERING

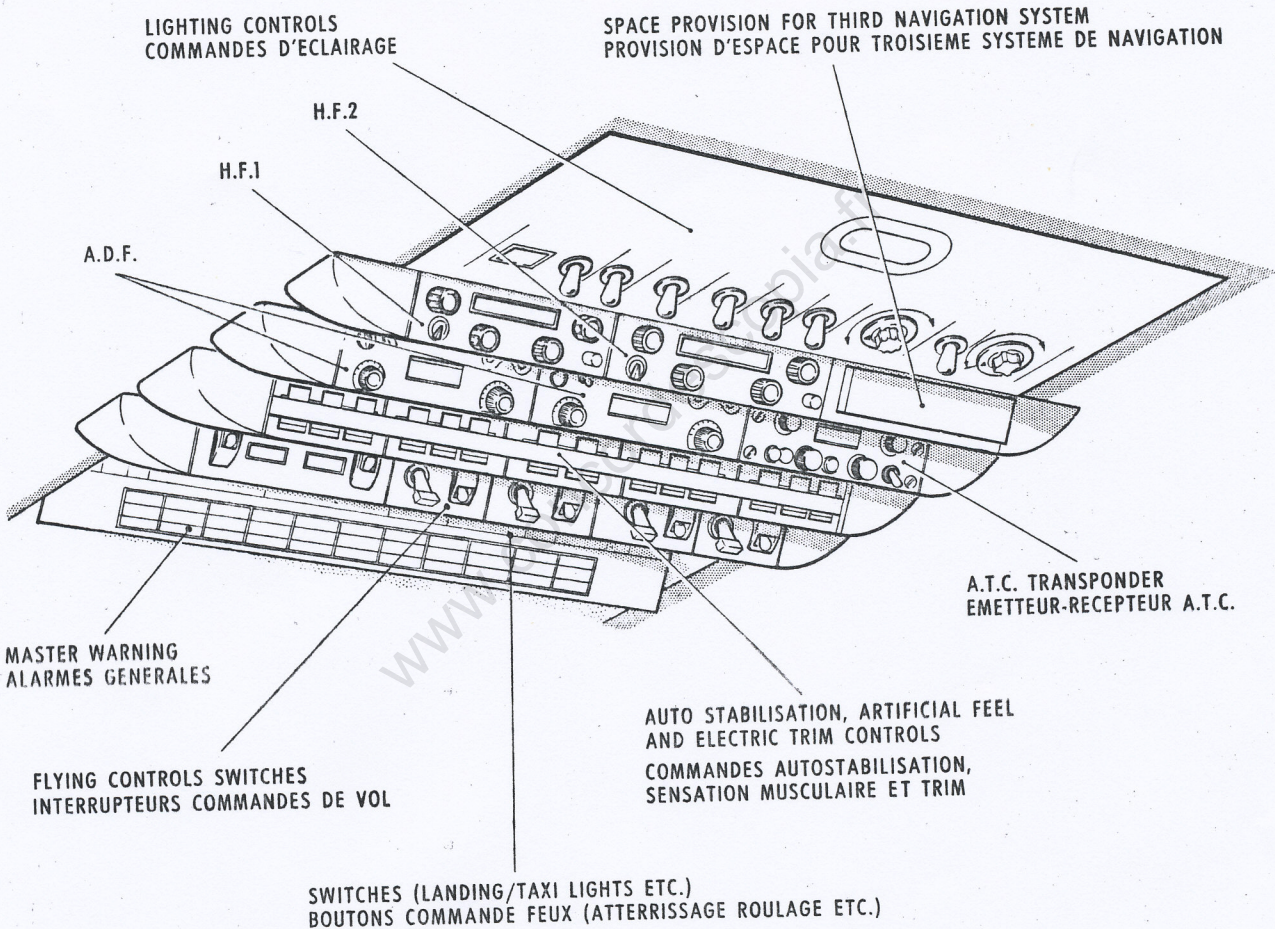
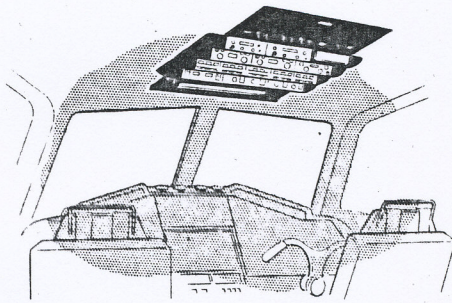
H.P COCKS

ON ON ON ON

1 2 3 4

OFF OFF OFF OFF





**FIG.7.7 ROOF PANEL  
 PANNEAU DE PLAFOND**